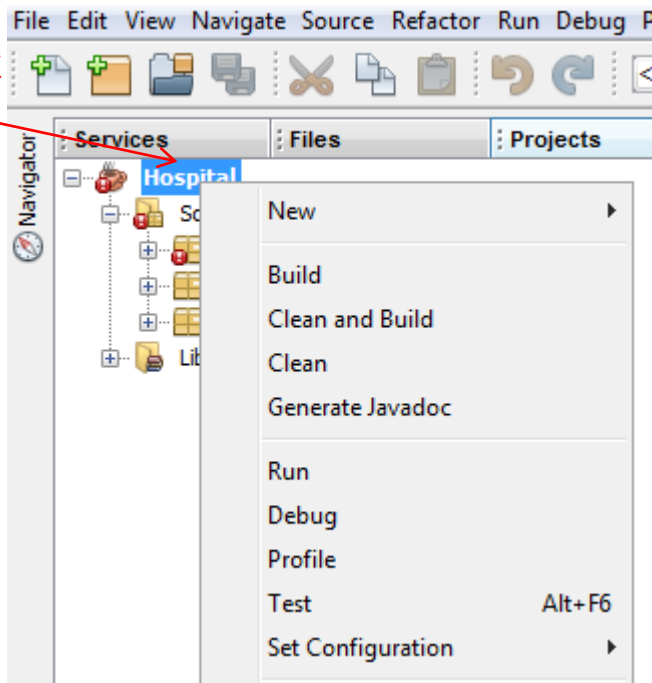
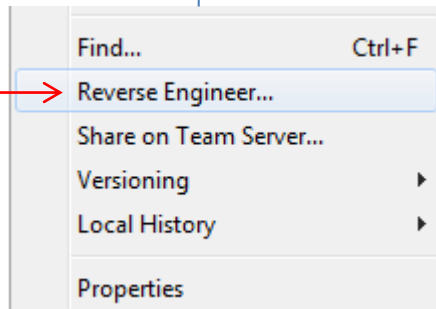


1- right-click



2- click
and see
next slide



Reverse Engineer

Selected Nodes: Hospital

Java Project Source Package Folders

| Reverse Engineer | Package Folder | Package Folder Label |
|-------------------------------------|----------------|----------------------|
| <input checked="" type="checkbox"/> | Hospital | Source Packages |

☐ Use Existing UML Project

Target Project:

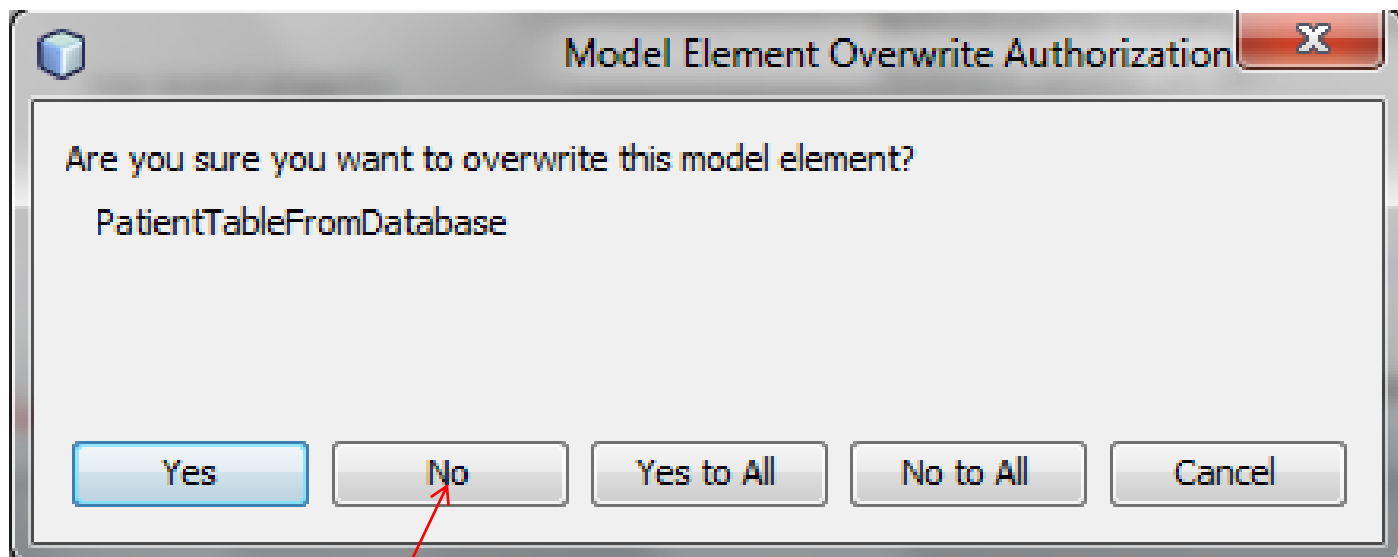
☒ Create New UML Project

Project Name:

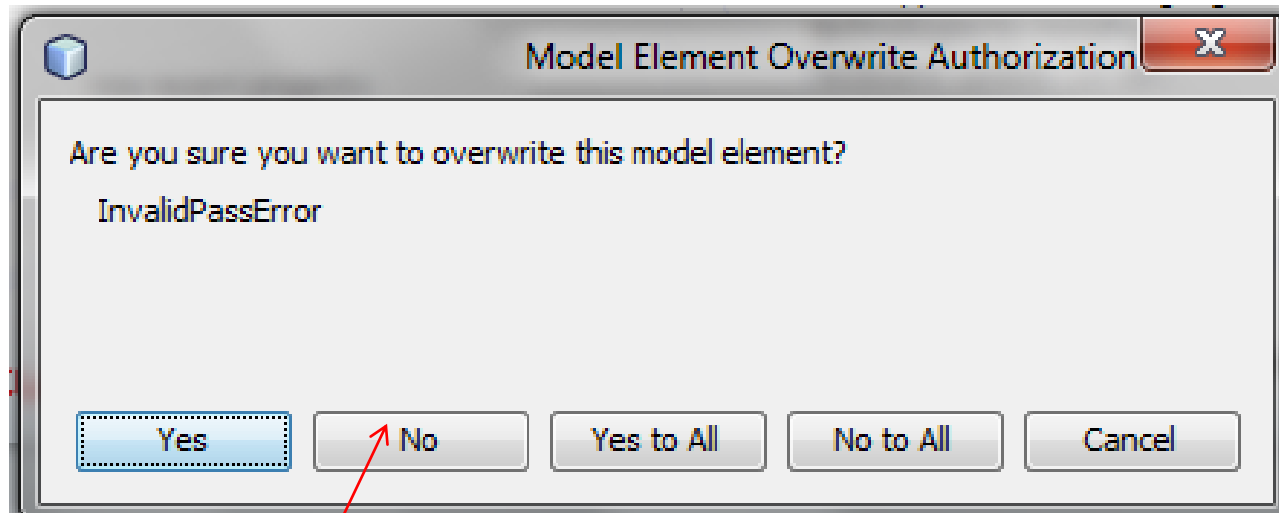
Project Location:

Project Folder:

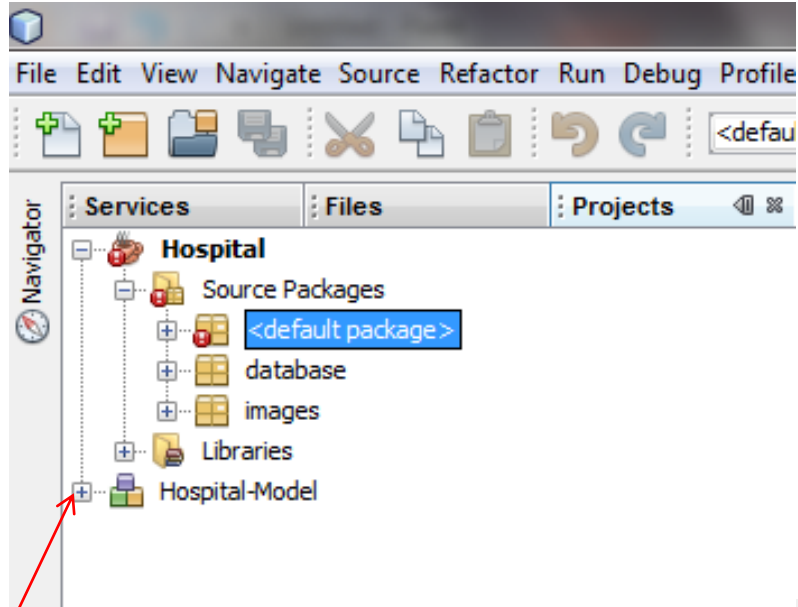
click
and see
next slide



click
and see
next slide



click
and see
next slide



Reverse Engineering Log x DA (clean) x

Resolving 28 attribute types

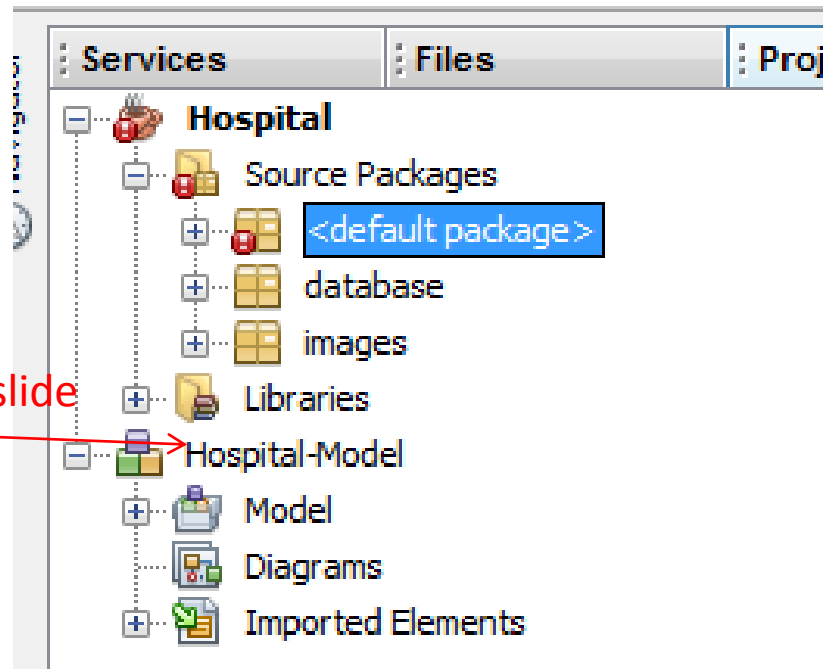
Integrating 43 elements

Building the query cache.

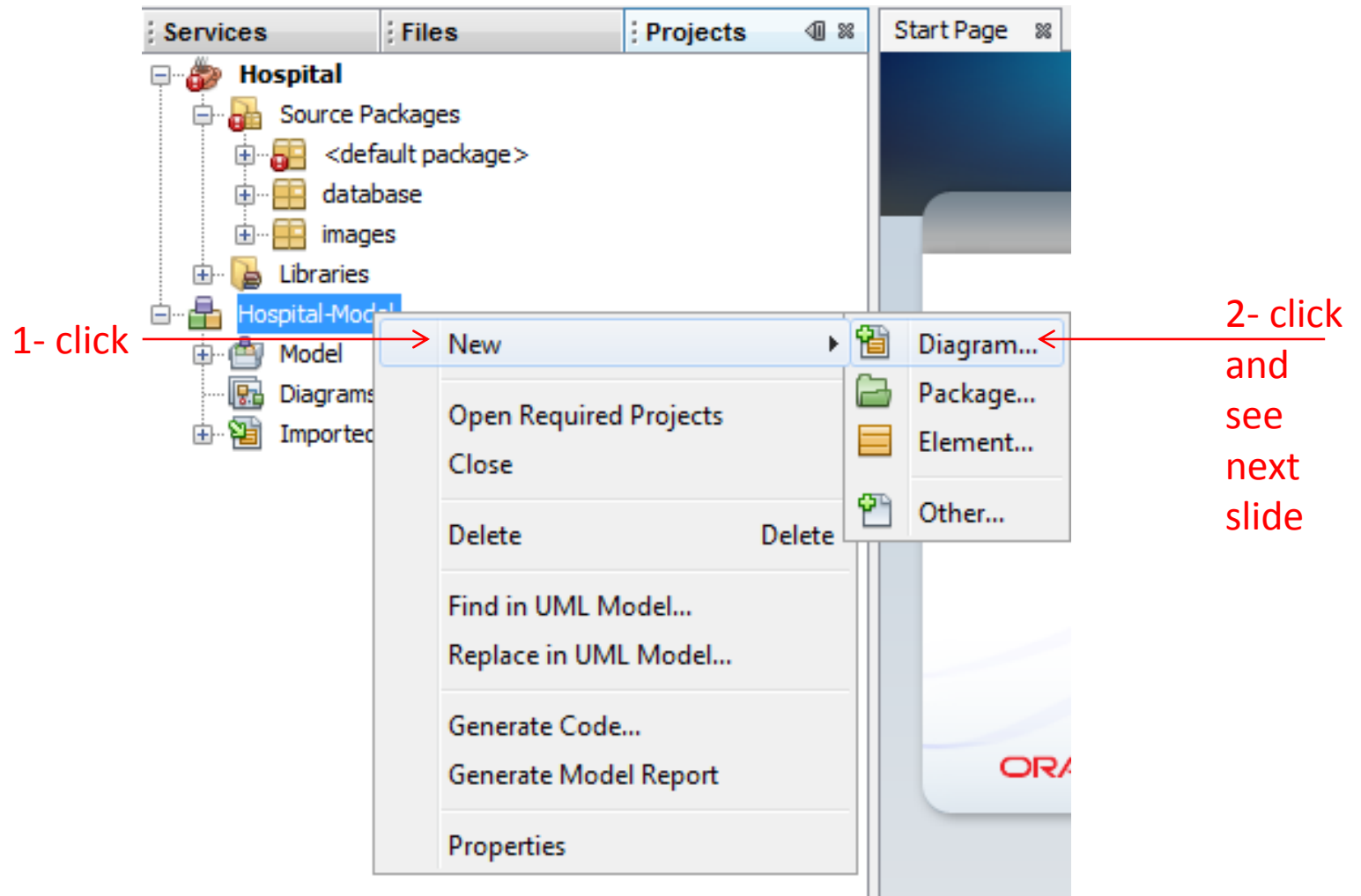
=====

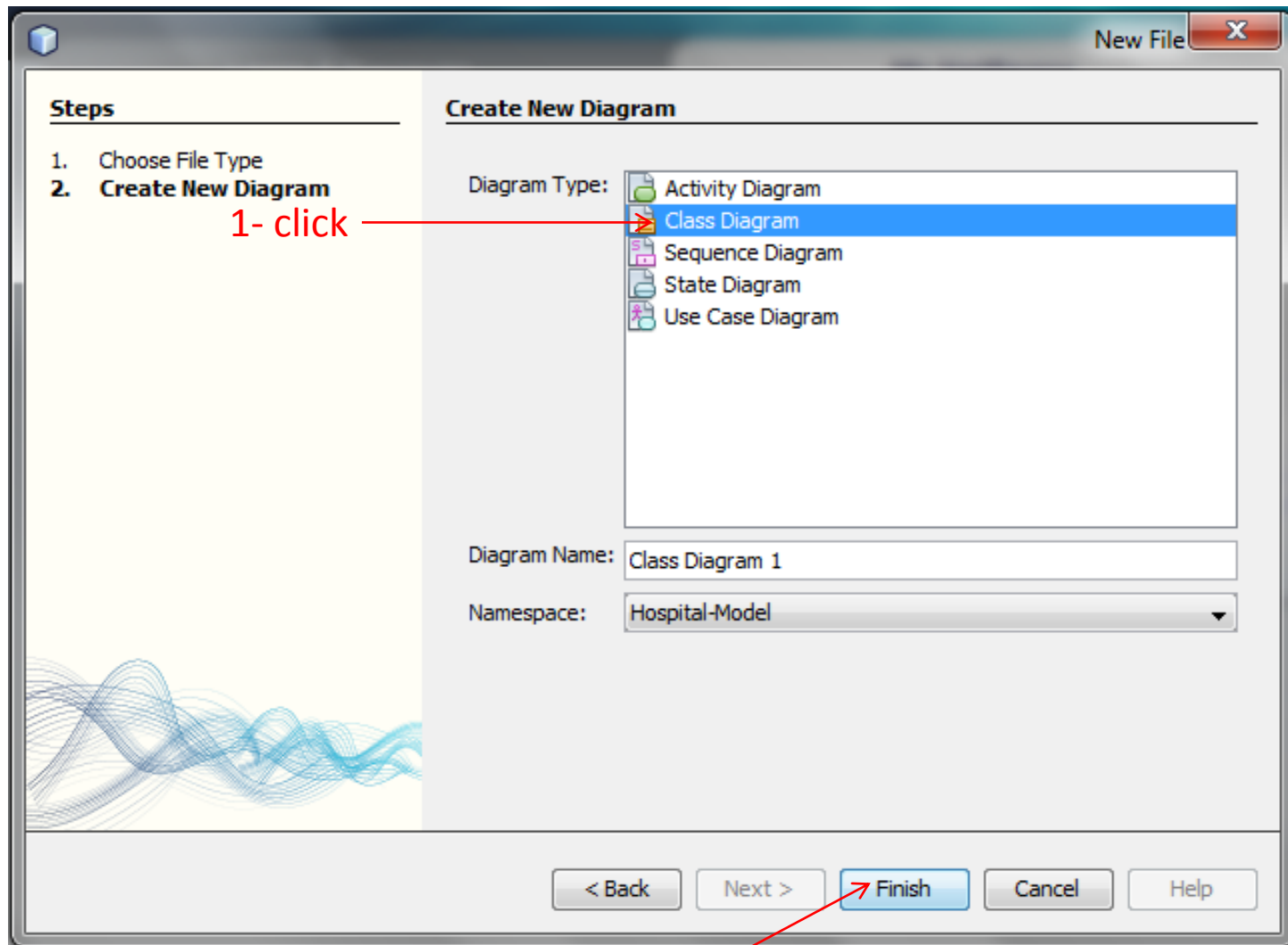
Task Successful (total time: 2 minutes 38 seconds)

Click
here
to
Expand
and
see
next
slide

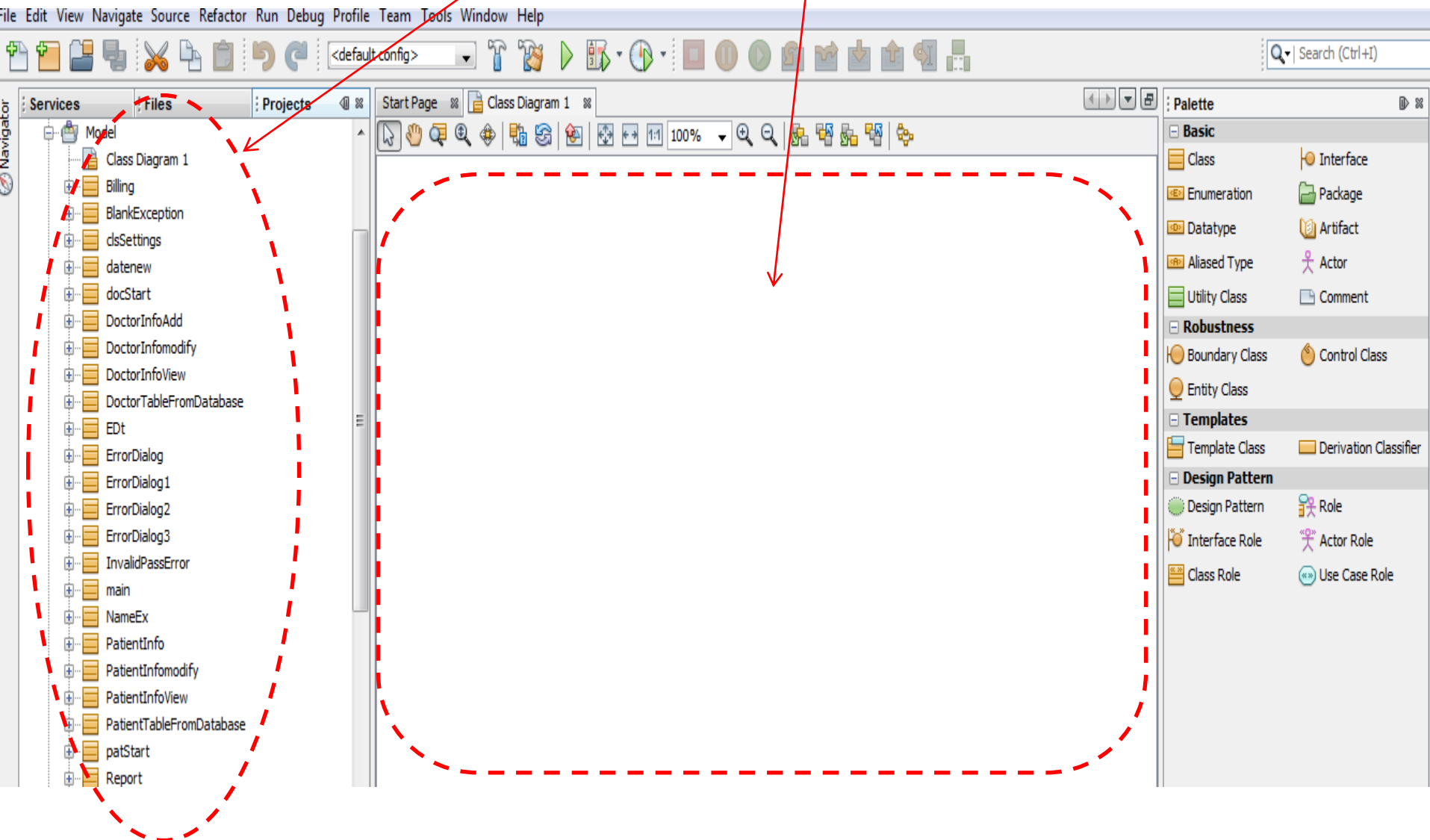


Right-click and see next slide





They are converted to individual components
but they are not shown here with the connections!!!!???



The same thing happens to “Sequence Diagram”
and “use Case Diagram”.